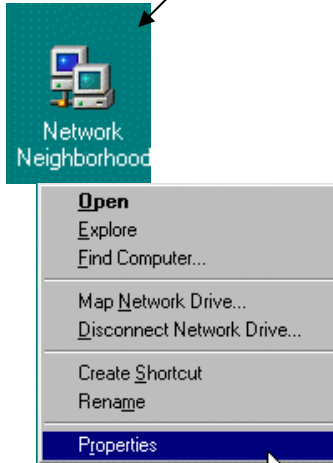
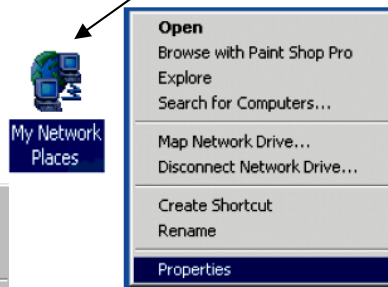


Windows 98 & ME

Windows 98



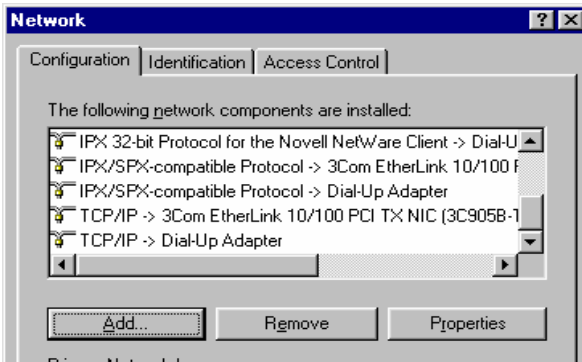
Windows ME



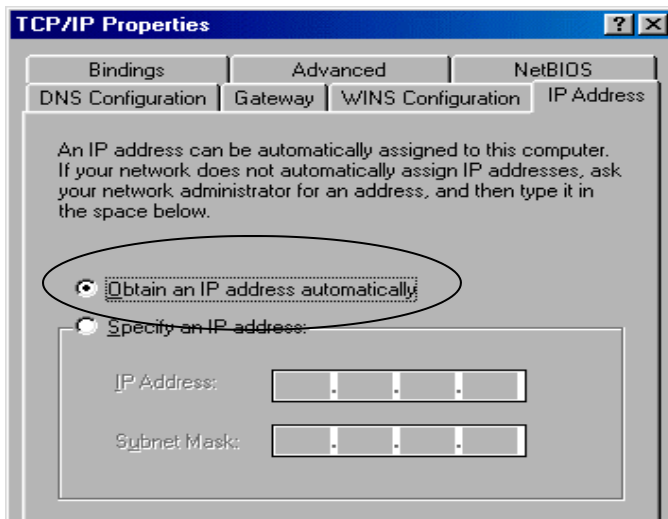
1. For Windows 98 users, right-click on **Network Neighborhood** from your desktop

For **Windows ME** users, right click on **My Network Places** from your desktop

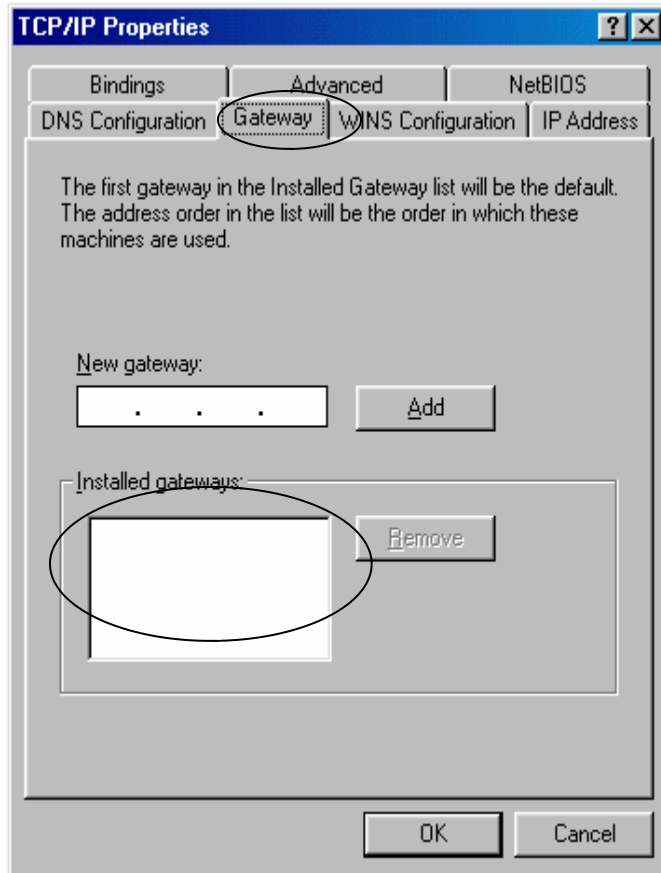
2. Click **Properties**



3. Double click on the TCP/IP that is associated with the installed NIC card. (Look for Etherlink or Fast Ethernet.)

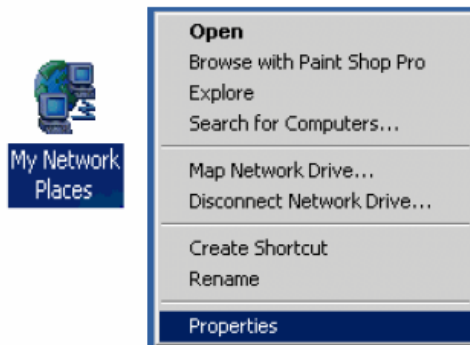


4. Click **Obtain an IP address automatically**.

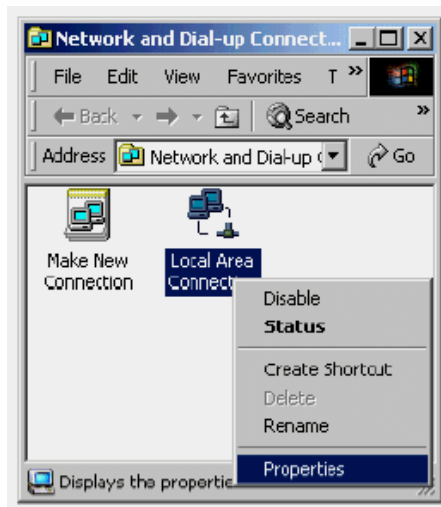


5. Click the Gateway tab and remove all information in installed gateway field.
6. Click OK to close this window and all remaining windows.
7. If prompted to restart your computer, select **Yes**

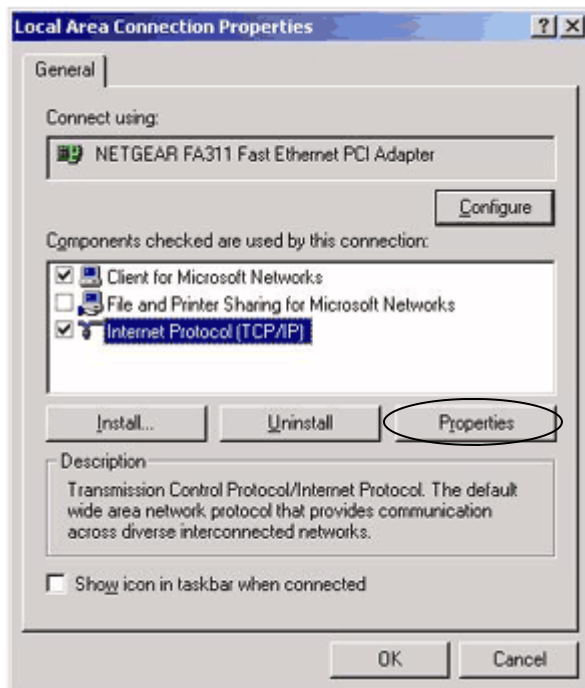
Windows 2000



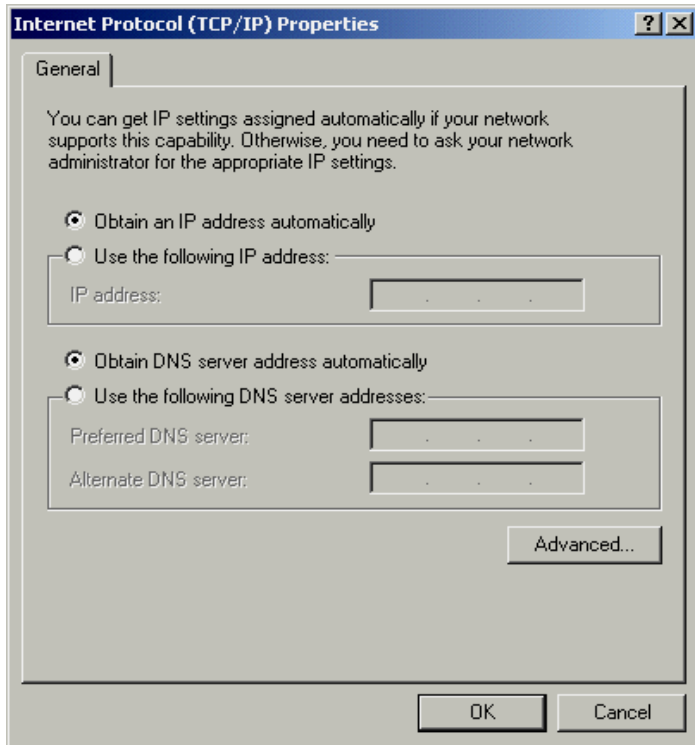
1. Right click the **My Network Places** icon located on your desktop. Then left click on **Properties** from the menu



2. Right click **Local Area Connection**. Left click on **Properties**



3. Select **Internet Protocol (TCP/IP)** and click **Properties**



4. Select **Obtain an IP address automatically**
5. Select **Obtain DNS server address automatically**
6. Click **OK** to close this window
7. Click **OK** to close the next window
8. If prompted to restart your computer, select **Yes**